

HC SERIES

Bare Tube SHELL & TUBE HEAT EXCHANGER



Development of
Global Design

We **COOL**
what you
POWER

For additional sizing information consider using TTP's **XSelector®** online sizing Program.*

HC SERIES

The HC Series will replace the long standing C Series.

The **HC Series** remains the industry standard in ultimate value and long-term reliability. This proven fixed tubesheet design shell and tube heat exchanger offers the cost effectiveness that comes with having a highly standard design, while easily providing for various options to meet specific application requirements.

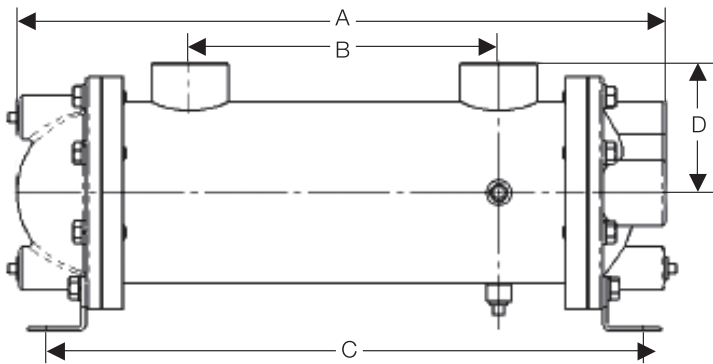
Features

- The HC series reflects the transition to a True Global Design
- Units to be manufactured in API owned facilities in Suzhou, China; and Racine, WI
- Dual manufacturing benefit gives greater assurance of meeting increasing demand and managing procurement risk & logistics
- Slotted mounting holes ensure fit with existing customer design
- Form and Function remain unchanged
- Negligible dimension and material difference (brass to steel internal baffles)
- Interchangeable mounting and installation patterns



Old Model	NEW Model
C-614-1.3-4-F	HC-614-1.3-4-F
C-614-3-4-F	HC-614-3-4-F
C-624-1.3-4-F	HC-624-1.3-4-F
C-624-3-4-F	HC-624-3-4-F
C-814-1.7-4-F	HC-814-1.7-4-F
C-814-4-4-F	HC-814-4-4-F
C-824-1.7-4-F	HC-824-1.7-4-F
C-824-4-4-F	HC-824-4-4-F
C-836-1.7-4-F	HC-836-1.7-4-F
C-836-4-4-F	HC-836-4-4-F
C-1014-2-6-F	HC-1014-2-6-F
C-1014-5-6-F	HC-1014-5-6-F
C-1024-2-6-F	HC-1024-2-6-F
C-1024-5-6-F	HC-1024-5-6-F
C-1036-2-6-F	HC-1036-2-6-F
C-1036-5-6-F	HC-1036-5-6-F
C-1224-2.5-6-F	HC-1224-2.5-6-F
C-1224-6-6-F	HC-1224-6-6-F
C-1236-2.5-6-F	HC-1236-2.5-6-F
C-1236-6-6-F	HC-1236-6-6-F
C-1248-2.5-6-F	HC-1248-2.5-6-F
C-1248-6-6-F	HC-1248-6-6-F
C-1260-2.5-6-F	HC-1260-2.5-6-F
C-1260-6-6-F	HC-1260-6-6-F
C-1724-3.5-6-F	HC-1724-3.5-6-F
C-1724-8.4-6-F	HC-1724-8.4-6-F
C-1736-3.5-6-F	HC-1736-3.5-6-F
C-1736-8.4-6-F	HC-1736-8.4-6-F
C-1748-3.5-6-F	HC-1748-3.5-6-F
C-1748-8.4-6-F	HC-1748-8.4-6-F
C-1760-3.5-6-F	HC-1760-3.5-6-F
C-1760-8.4-6-F	HC-1760-8.4-6-F
C-1772-3.5-6-F	HC-1772-3.5-6-F
C-1772-8.4-6-F	HC-1772-8.4-6-F

Dimension Comparison C to HC



C-Series	A	B	C	D	Mounting Bracket Slot	HC-Series	A	B	C	D	Mounting Bracket Slot
C-1014-5-6-F	18.81±.19	9.00±.19	17.12±.19	3.75±.19	.50x.75	HC-1014-5-6-F	18.83±.19	9.00±.19	17.35±.19	3.43±.19	.50x.75
C-1024-5-6-F	28.81±.19	19.00±.19	27.12±.19	3.75±.19	.50x.75	HC-1024-5-6-F	28.83±.19	19.00±.19	27.35±.19	3.43±.19	.50x.75
C-1036-2-6-F	40.81±.19	31.00±.19	39.12±.19	3.75±.19	.50x.75	HC-1036-2-6-F	40.83±.19	31.00±.19	39.35±.19	3.43±.19	.50x.75
C-1224-6-6-F	29.13±.19	18.25±.19	27.13±.19	4.25±.19	.50x.75	HC-1224-6-6-F	28.94±.19	18.25±.19	27.07±.19	4.06±.19	.50x.75
C-1236-2.5-6-F	41.13±.19	30.25±.19	39.13±.19	4.25±.19	.50x.75	HC-1236-2.5-6-F	40.94±.19	30.25±.19	39.07±.19	4.06±.19	.50x.75
C-1248-2.5-6-F	53.13±.19	42.25±.19	51.13±.19	4.25±.19	.50x.75	HC-1248-2.5-6-F	52.94±.19	42.25±.19	51.07±.19	4.06±.19	.50x.75
C-1736-8.4-6-F	41.95±.19	29.00±.19	39.59±.19	5.84±.19	.62x.88	HC-1736-8.4-6-F	42.70±.19	29.00±.19	39.31±.19	5.43±.19	.63x.88
C-1748-3.5-6-F	53.95±.19	41.00±.19	51.59±.19	5.84±.19	.62x.88	HC-1748-3.5-6-F	54.70±.19	41.00±.19	51.31±.19	5.43±.19	.63x.88
C-1772-3.5-6-F	77.95±.19	65.00±.19	75.59±.19	5.84±.19	.62x.88	HC-1772-3.5-6-F	78.70±.19	65.00±.19	75.31±.19	5.43±.19	.63x.88

Dimensions are in inches. Contact TTP for model sizes HC-600, 800, 1260, 1760 dimensions.

* To register for **XSelector®** please go to www.thermaltransfer.com/get-in-touch/ and complete the **XSelector®** Inquiry form and submit. Download the **XSelector®** for both Apple and Android formats by searching for **XSelector®** in their App Stores. You must first register for **XSelector®** before using it on mobile devices.